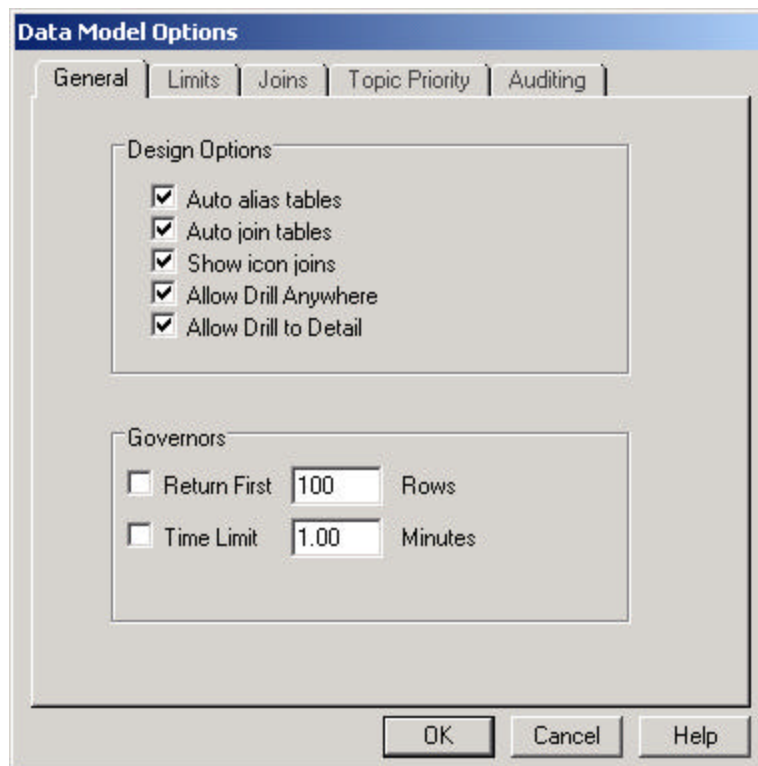


How to Duplicate a Query

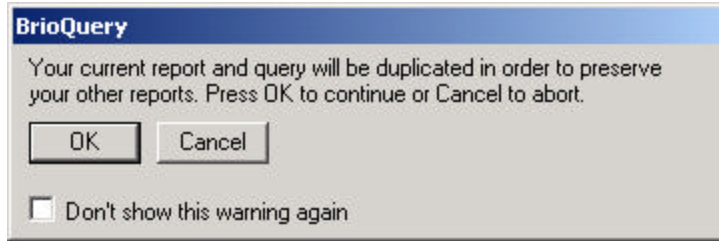
Sometimes, you create a query that will be copied or duplicated for use again within the same document. Brio does not have pull-down menu features to allow you to duplicate or copy the query. However, you can trick the system into copying the query by using “Drill to Detail”. This trick only works within the same document.

Here are the steps:

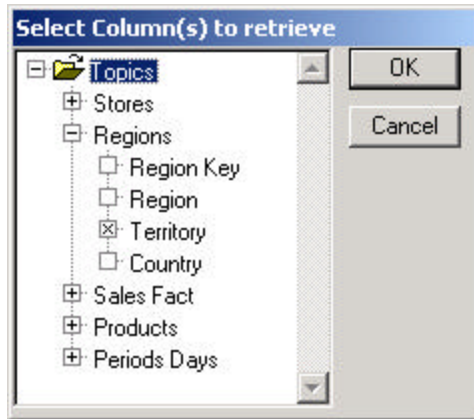
1. Create your complex query.
2. Select Data Model > Data Model Options > General > Allow Drill to Detail



3. Process
4. Insert a new Pivot (can be removed later) and create a trivial pivot table
5. Select a label on the Pivot > Drill Anywhere > Drill to Detail. You'll get a pop up window to duplicate your query and select **OK**.



6. Select one field from the following window and press **OK**.



7. The Query, Results and Pivot sections will be duplicated, however, the field you selected above will show up in the Request and Limit Command lines in the Query Section. You can now remove them and the query will be like the original query, which may now be modified.

Cabri Ltd. is a training company, distinguished by our in-depth knowledge of data warehouse query tools and industry insight. We specialize in product training, installation and custom course development for communication, manufacturing, e-business and public agency clients. Our focus is providing customers with innovative solutions and "value-added" approaches for training and product implementation.

Cabri Ltd. provides high quality training and consulting services at competitive prices. We maintain the highest standards of integrity with our customers and employees, priding ourselves in the quality training and customization services offered by our staff of trainers and developers.

Email: cabri@cabri-ltd.com
Web Site: www.cabri-ltd.com
Phone: 206-463-5157
Fax: 425-952-0165