

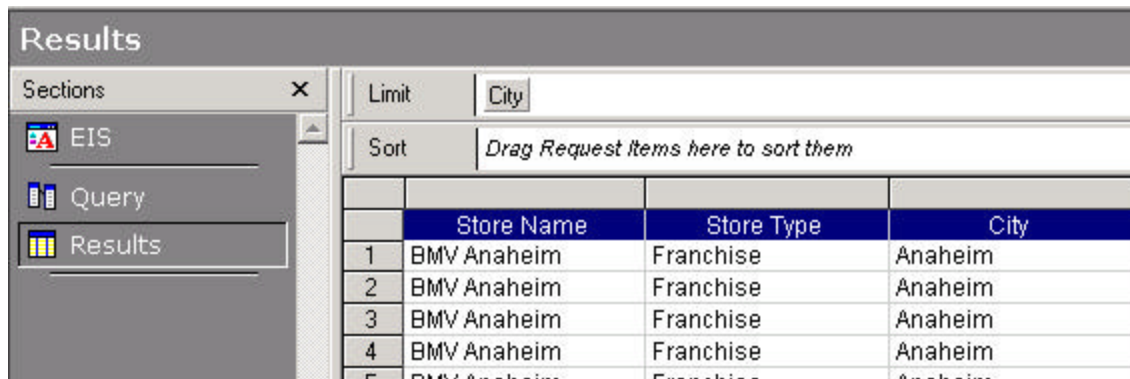
Limit Pop Up Panels in EIS Sections

In previous software versions (R5.5 and below), Brio developed EIS Sections using a proprietary scripting language. They developed a new approach to EIS Section development in version R6.x and above using a standard scripting language called JavaScript. To handle migration from R5.5 to R6.x, the old proprietary code is encapsulated in a method called ExecuteBScript. It turns out there are some functionalities you can perform in the old proprietary code that aren't available in the JavaScript version of the Object Browser. For example, in the old R5.5.x proprietary code, you can force a Limit Pop Up Panel to appear. That feature is not available using JavaScript. To figure out all the possible things you can do with ExecuteBScript, you need to load the old version of Brio R5.5.x and practice with it.

Here is one example of how to get the Limit Pop Up Panel to show in version R6.x and higher: (Beware: it is not clear how long Brio will support the old proprietary scripting language.)

Follow these steps:

1. Create a query.
2. In the Results section drag up a topic item and create a limit. (I created one for City)



The screenshot shows the 'Results' window in Brio. On the left, there is a 'Sections' pane with 'EIS', 'Query', and 'Results' sections. The main area shows a 'Limit' set to 'City' and a 'Sort' option. Below this is a table with the following data:

	Store Name	Store Type	City
1	BMW Anaheim	Franchise	Anaheim
2	BMW Anaheim	Franchise	Anaheim
3	BMW Anaheim	Franchise	Anaheim
4	BMW Anaheim	Franchise	Anaheim
5	BMW Anaheim	Franchise	Anaheim

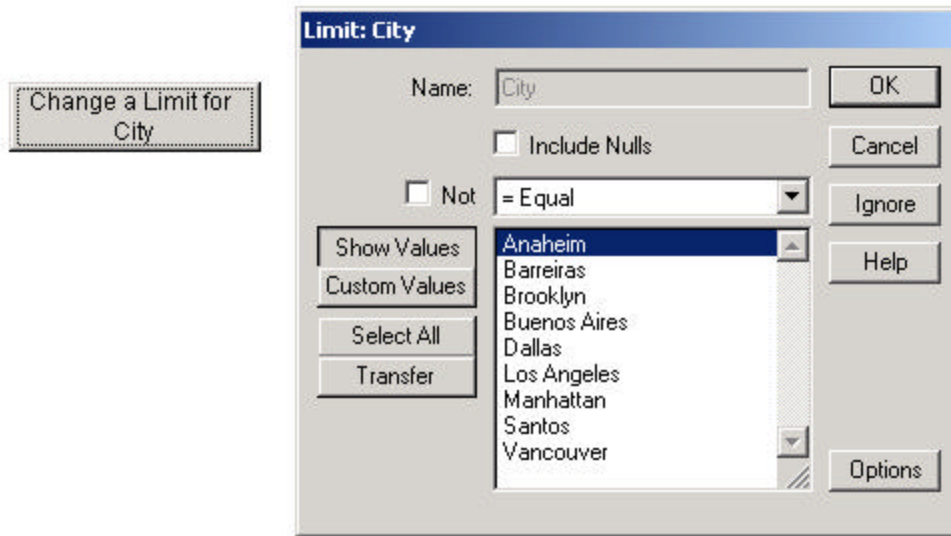
3. Insert an EIS section and add a button. I called mine:
4. Script the button with the following code:



```
Application.ExecuteBScript("Modify limit  
root.'Results'.'city'.'city' ")
```

To create a new limit with a pop up panel, change 'city'. 'city' in the code example above, inserting the new topic items. Follow the above syntax exactly. The syntax requires that the limited topic item appears twice.

When pressing the EIS button, this is the pop up Limit Panel that you'll see.



NOTE: This Newscast was tested on Brio R6.2.2.53

Cabri Ltd. is a training company, distinguished by our in-depth knowledge of data warehouse query tools and industry insight. We specialize in product training, installation and custom course development for communication, manufacturing, e-business and public agency clients. Our focus is providing customers with innovative solutions and "value-added" approaches for training and product implementation.

Cabri Ltd. provides high quality training and consulting services at competitive prices. We maintain the highest standards of integrity with our customers and employees, priding ourselves in the quality training and customization services offered by our staff of trainers and developers.

Email: cabri@cabri-ltd.com
Web Site: www.cabri-ltd.com
Phone: 206-722-2831
Fax: 425-952-0165