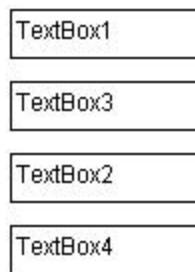


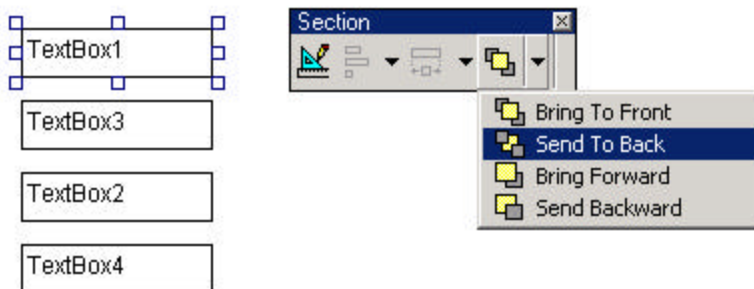
## Trick – Changing Tab Order on an EIS section

When creating EIS sections, if you use a lot of Text boxes, you typically want the cursor focus to go from Text box to Text box in a particular order. The default is the order used when you created the text boxes. So, if you created the text boxes so they look like the following:



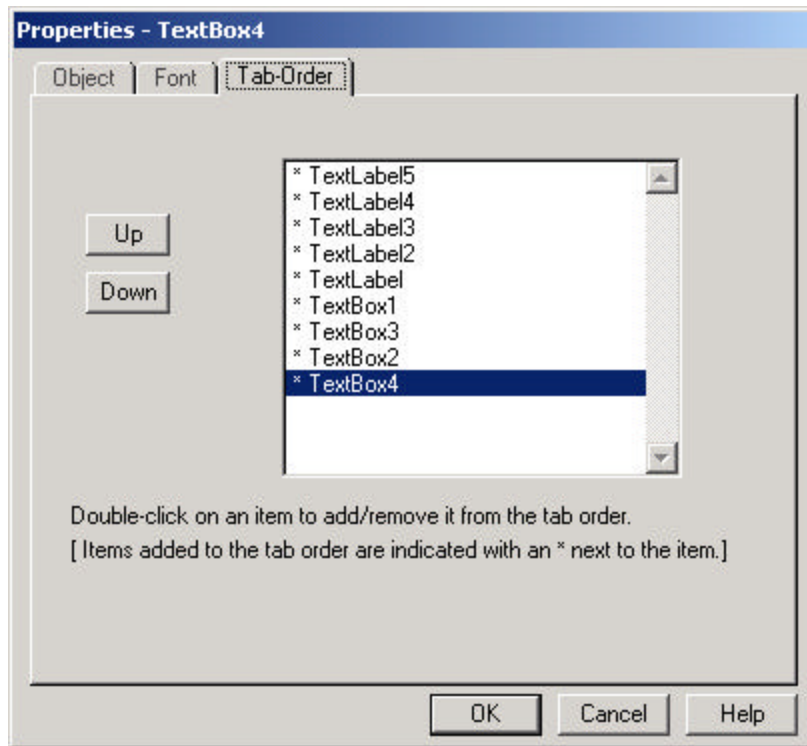
The cursor will jump from Textbox1 to Textbox2 to Textbox3 to Textbox4, which was the order you created them. However, you want the cursor to move from Textbox1 to Textbox3 to Textbox2 to Textbox4.

To force the cursor to move from Textbox1 to Textbox3 to Textbox2 to Textbox4, select **Textbox1**, then select the **Order icon drop down** on the **Section Toolbar** and select **Send To Back**. Repeat this process with Textbox3, Textbox2 and finally Textbox4.



When you put your EIS back into RUN mode, you see that the cursor will now move from textbox to textbox in the order that you want. This trick works for Brio R6.2.3 and below.

Starting with Brio R6.2.3 and above, Brio has added the capability to change tab order. Select the EIS background or and EIS Object > Right Click for Speed Menu > Properties. The Properties Box has been enhanced with an additional tab called "Tab-Order".



***NOTE: This Newscast was tested on Brio R6.2.3.60***

**Cabri Ltd.** is a training company, distinguished by our in-depth knowledge of data warehouse query tools and industry insight. We specialize in product training, installation and custom course development for communication, manufacturing, e-business and public agency clients. Our focus is providing customers with innovative solutions and "value-added" approaches for training and product implementation.

**Cabri Ltd.** provides high quality training and consulting services at competitive prices. We maintain the highest standards of integrity with our customers and employees, priding ourselves in the quality training and customization services offered by our staff of trainers and developers.

**Email: [cabri@cabri-ltd.com](mailto:cabri@cabri-ltd.com)**  
**Web Site: [www.cabri-ltd.com](http://www.cabri-ltd.com)**  
**Phone: 206-463-5157**  
**Fax: 425-952-0165**