

Are Limits Case Sensitive?

When performing limits in the Query section people often ask, “Are Limits case sensitive?” The answer depends on the database, not on Brio. A database system can have an option specifying whether it is case sensitive or not. Given this option, the better assumption for the end user to make is Limits ARE case sensitive. This way you take into account all possibilities when performing limits. The problem with this assumption is that it may be very time consuming to set up the limit and process. A way around this problem is to create a computed column and change the values in that column to all upper case. Then perform a limit on the computed column you just created, entering in the value that you want in all upper case characters.

For example, while working in the Query section you want to select **Regions = Americas**. First create a computed column called Regions-UC (for upper case). Open the function box and select the String Functions, then Ucase and OK. Next select the Reference button, Regions and Region. See Figure 1.

Now select the computed Regions-UC and drag it to the Limit Line. Select **Custom Values** and enter **AMERICAS** in all upper case letters (see Figure 2). If the database stored Americas like AMERICAS, Americas, AMericas, etc, all of them will be selected with this method and case sensitivity is not an issue.

The syntax and function used in the example is based on connecting to a Microsoft ACCESS database. The syntax and function may be different when using different databases.

Fig. 1. Create a Computed Item

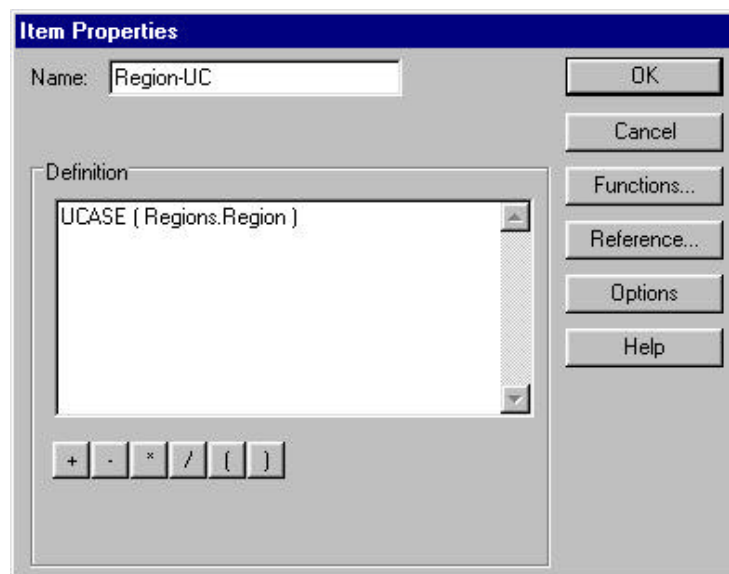
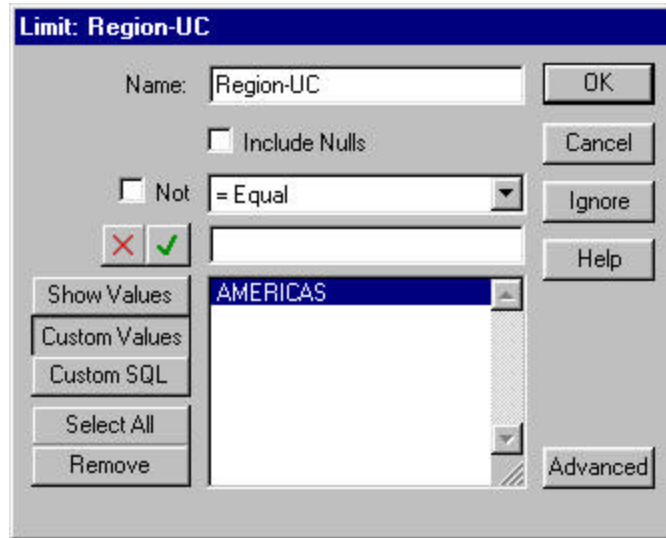


Fig 2. Using the Computed Column as a limit.



NOTE: This Newscast was tested on Brio R6.2.0.75

Cabri Ltd. is a training company, distinguished by our in-depth knowledge of data warehouse query tools and industry insight. We specialize in product training, installation and custom course development for communication, manufacturing, e-business and public agency clients. Our focus is providing customers with innovative solutions and "value-added" approaches for training and product implementation.

Cabri Ltd. provides high quality training and consulting services at competitive prices. We maintain the highest standards of integrity with our customers and employees, priding ourselves in the quality training and customization services offered by our staff of trainers and developers.

Email: cabri@cabri-ltd.com
Web Site: www.cabri-ltd.com
Phone: 206-463-5157
Fax: 425-952-0165