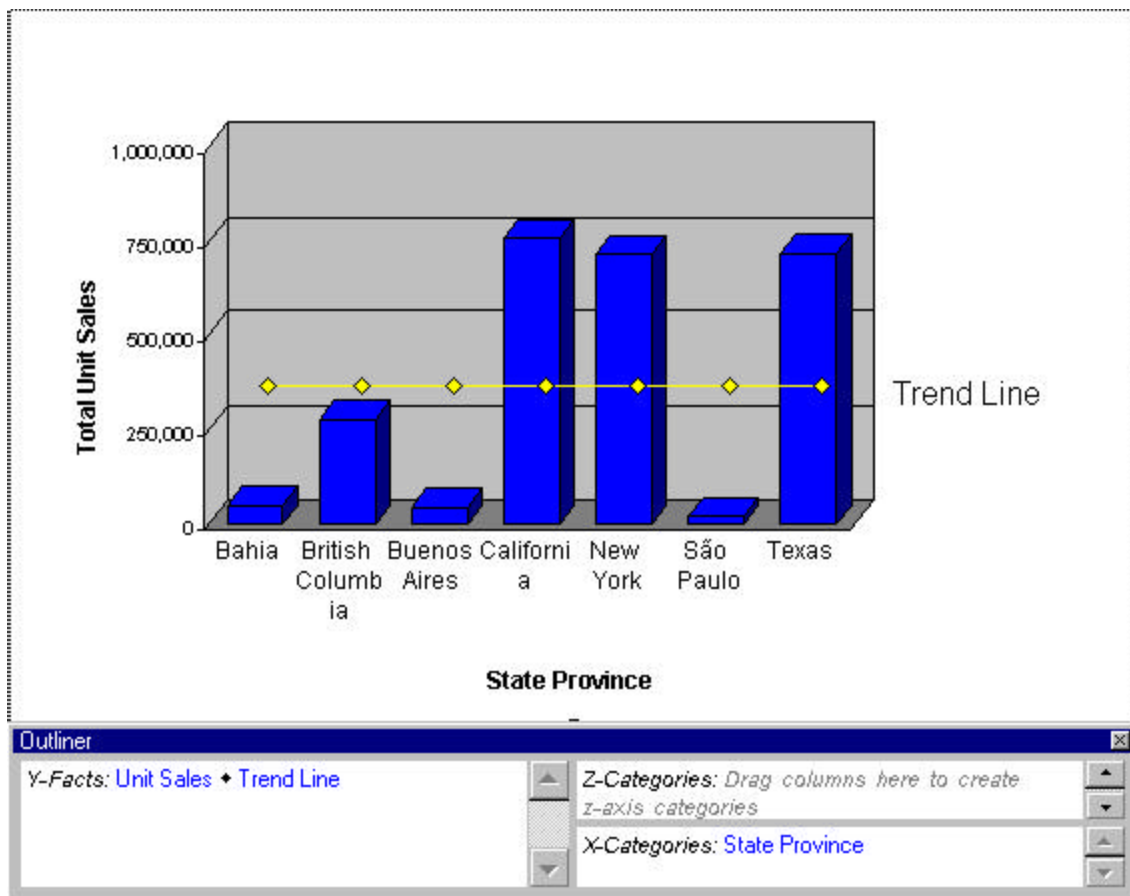
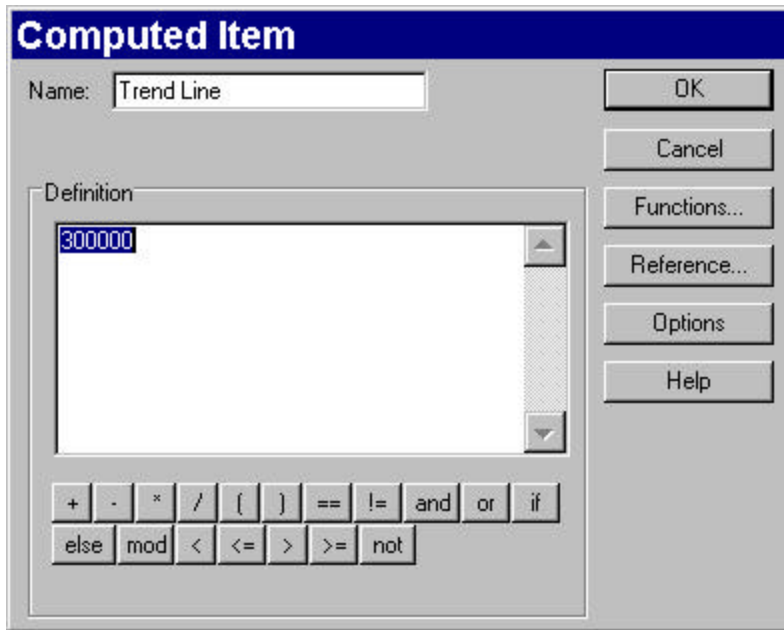


Add a Trend Line to a Chart

Create a chart, select the Bar Line chart from the Chart type Icon on the Section tool bar.



Add a computed column. Give it a name, I called it Trend Line. In the definition box, type a constant, I used 300000.



Insert Text by Right Clicking for speed menu > Insert Text, and type whatever you want. I typed in Trend Line.

Cabri Ltd. is a training company, distinguished by our in-depth knowledge of data warehouse query tools and industry insight. We specialize in product training, installation and custom course development for communication, manufacturing, e-business and public agency clients. Our focus is providing customers with innovative solutions and "value-added" approaches for training and product implementation.

Cabri Ltd. provides high quality training and consulting services at competitive prices. We maintain the highest standards of integrity with our customers and employees, priding ourselves in the quality training and customization services offered by our staff of trainers and developers.

Email: cabri@cabri-ltd.com
Web Site: www.cabri-ltd.com
Phone: 206-463-5157
Fax: 425-952-0165